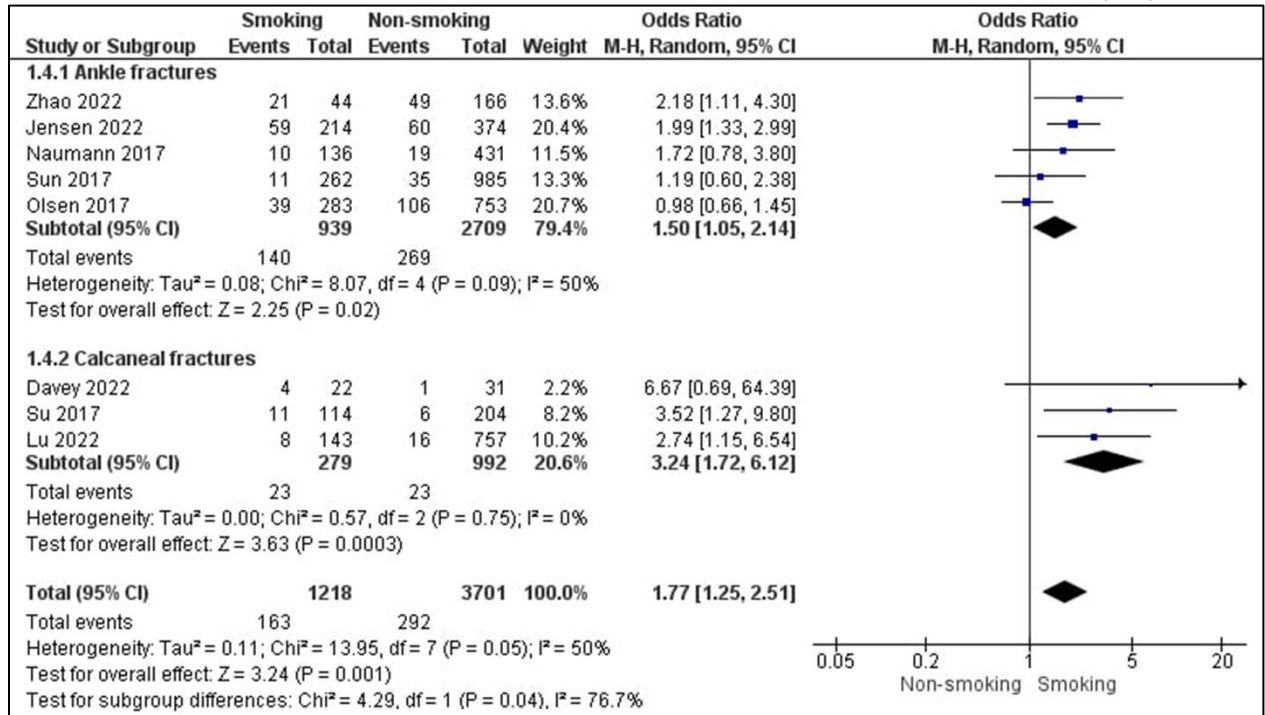
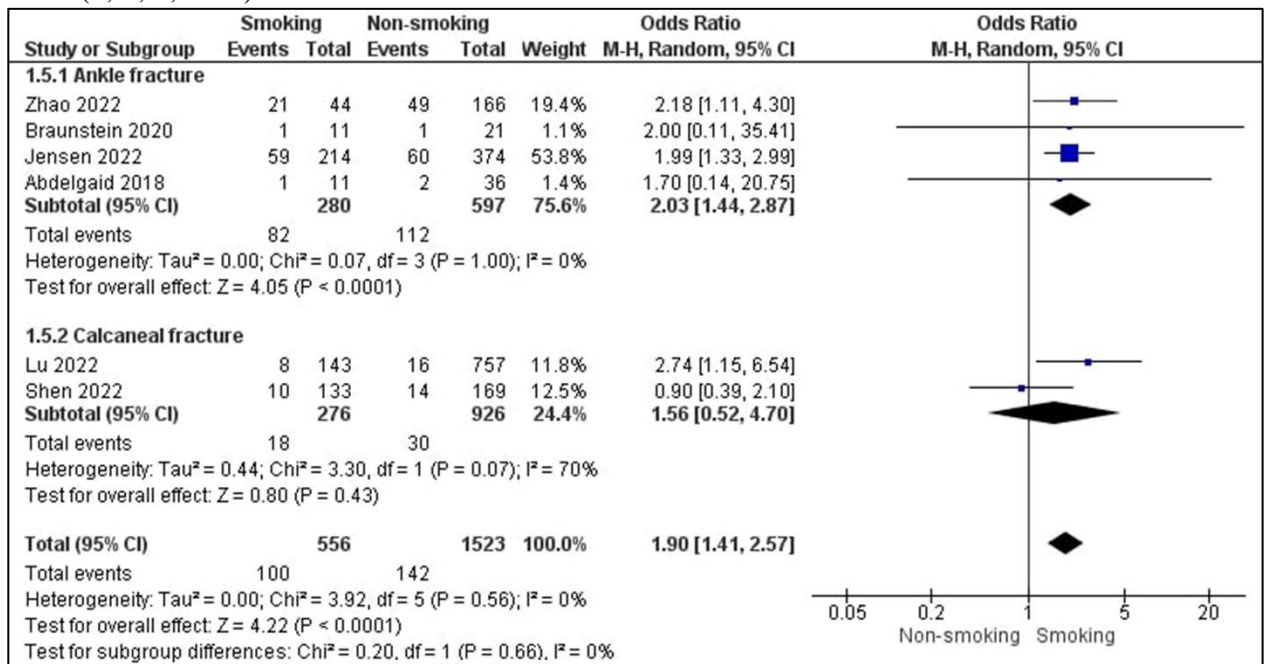


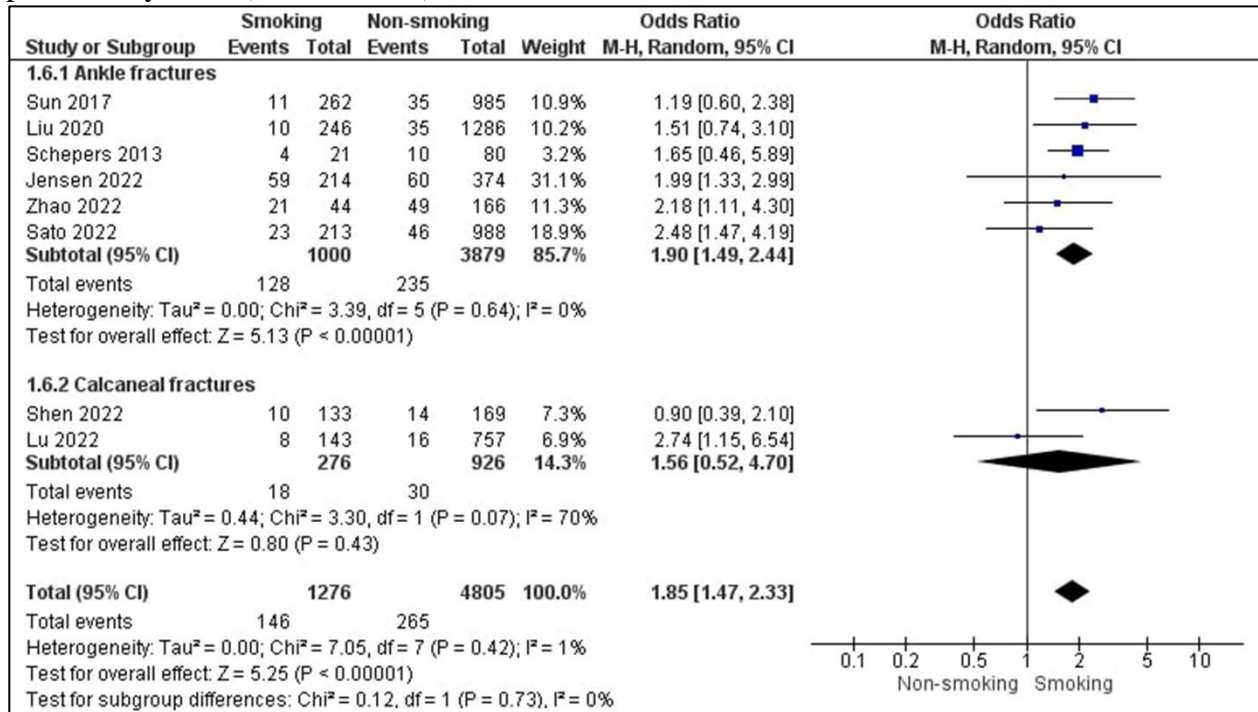
**Supplementary Figure S1** Comparison in SSI rates between smoking and non-smoking groups after ORIF of ankle and calcaneal fractures in studies that identified current smokers (1-8)



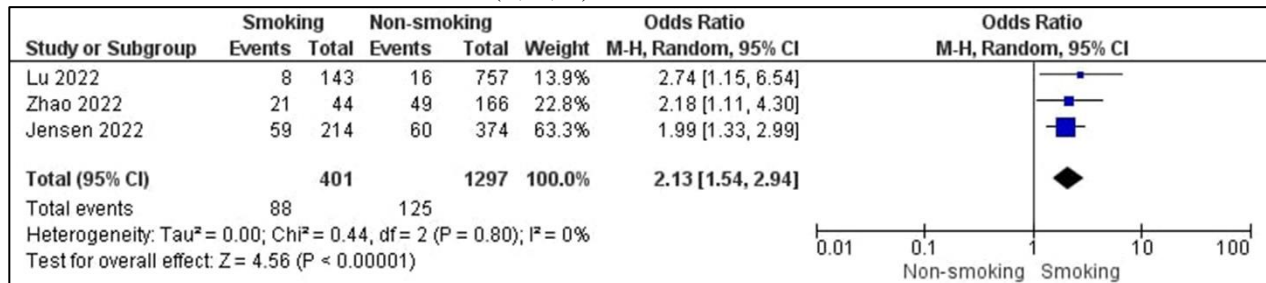
**Supplementary Figure S2** Comparison in SSI rates between smoking and non-smoking groups after ORIF of ankle and calcaneal fractures in studies that had a follow-up duration of 1 year or more (1, 2, 7, 9-11).



**Supplementary Figure S3** Comparison in SSI rates between smoking and non-smoking groups after ORIF of ankle and calcaneal fractures in studies that defined SSI according to the definition provided by CDC (1, 2, 4, 12-14).



**Supplementary Figure S4** Comparison in SSI rates between smoking and non-smoking groups after ORIF of ankle and calcaneal fractures in studies that both identified current smokers and adhered to the CDC definition of SSI (1, 2, 7).



## References

1. Zhao H, Meng J, Sun T, Wan Z, Qin S, Zhang F, et al. Risk factors for deep surgical site infection following surgically treated peri-ankle fractures: a case-control study based on propensity score matching. *J Orthop Surg Res.* 2022;17(1):542.
2. Giver Jensen T, Aqeel Khudhair Almadareb M, Booth Nielsen M, Jesper Hansen E, Lindberg-Larsen M. Outcome After Treatment of Distal Fibula Fractures Using One-Third Tubular Plate, Locking Compression Plate or Distal Anatomical Locking Compression Plate. *J Foot Ankle Surg.* 2023;62(3):524-8.
3. Naumann MG, Sigurdson U, Utvåg SE, Stavem K. Functional outcomes following surgical-site infections after operative fixation of closed ankle fractures. *Foot Ankle Surg.* 2017;23(4):311-6.
4. Sun R, Li M, Wang X, Li X, Wu L, Chen Z, et al. Surgical site infection following open reduction and internal fixation of a closed ankle fractures: A retrospective multicenter cohort study. *International Journal of Surgery.* 2017;48:86-91.
5. Olsen LL, Møller AM, Brorson S, Hasselager RB, Sort R. The impact of lifestyle risk factors on the rate of infection after surgery for a fracture of the ankle. *Bone Joint J.* 2017;99-b(2):225-30.
6. Davey MS, Staunton P, Lambert LA, Davey MG, Walsh JC. Evaluating Short-Term Outcomes Post-Intra-Articular Calcaneal Fracture Fixation via a Sinus Tarsi Approach in a Non-Exclusively Selected Cohort. *J Foot Ankle Surg.* 2021;60(2):302-6.
7. Lu K, Ma T, Yang C, Qu Q, Liu H. Risk prediction model for deep surgical site infection (DSSI) following open reduction and internal fixation of displaced intra-articular calcaneal fracture. *Int Wound J.* 2022;19(3):656-65.
8. Su J, Cao X. Risk factors of wound infection after open reduction and internal fixation of calcaneal fractures. *Medicine (Baltimore).* 2017;96(44):e8411.
9. Braunstein M, Baumbach SF, Urresti-Gundlach M, Borgmann L, Bocker W, Polzer H. Arthroscopically Assisted Treatment of Complex Ankle Fractures: Intra-articular Findings and 1-Year Follow-Up. *J Foot Ankle Surg.* 2020;59(1):9-15.
10. Abdelgaid SM, Moursy AF, Elgebaly EAA, Aboelenien AM. Minimally Invasive Treatment of Ankle Fractures in Patients at High Risk of Soft Tissue Wound Healing Complications. *Journal of Foot and Ankle Surgery.* 2018;57(3):557-71.
11. Shen L, Wang Q, Chen J, Jiang Z. Risk factor of postoperative incision infection after plate internal fixation of calcaneal fractures: a retrospective study. *BMC Musculoskelet Disord.* 2022;23(1):1091.
12. Liu D, Zhu Y, Chen W, Li M, Liu S, Zhang Y. Multiple preoperative biomarkers are associated with incidence of surgical site infection following surgeries of ankle fractures. *International Wound Journal.* 2020;17(3):842-50.
13. Schepers T, De Vries MR, Van Lieshout EM, Van der Elst M. The timing of ankle fracture surgery and the effect on infectious complications; a case series and systematic review of the literature. *Int Orthop.* 2013;37(3):489-94.
14. Sato T, Takegami Y, Sugino T, Bando K, Fujita T, Imagama S. Smoking and trimalleolar fractures are risk factors for infection after open reduction and internal fixation of closed ankle fractures: A multicenter retrospective study of 1,201 fractures. *Injury.* 2021;52(7):1959-63.